

Institute Academic Quality Assurance Cell
Stakeholder Relationship
Student Satisfaction Survey 2022-23

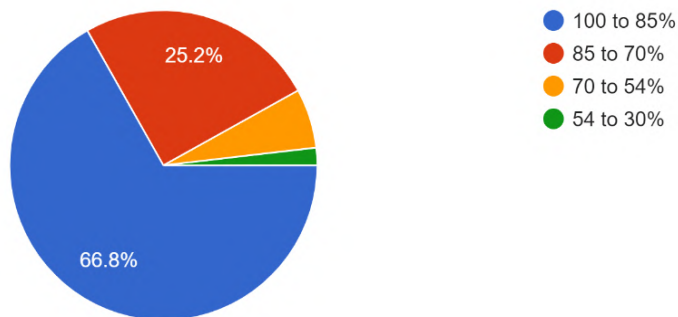
Summary of the Feedback on Teaching and Learning in the last academic year 2022-23.

Sample size: 710

Feedback on the Teaching Learning Process for the Academic year 2022-23

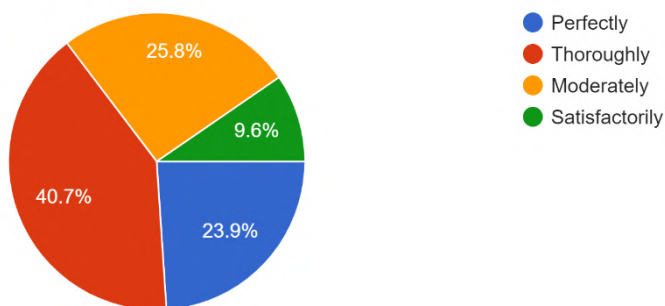
How much of the syllabus was covered in the classes?

710 responses



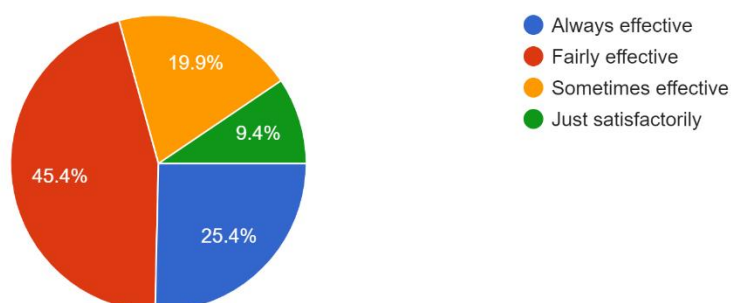
How well did the teachers prepare for the classes?

710 responses



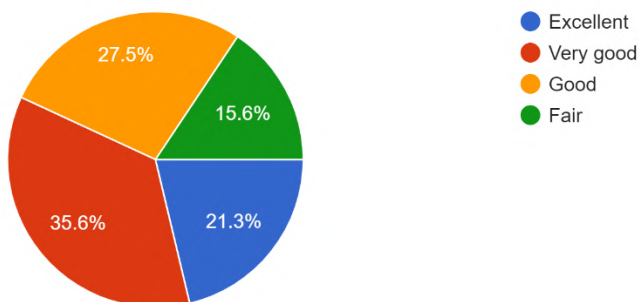
How well were the teachers able to communicate?

710 responses



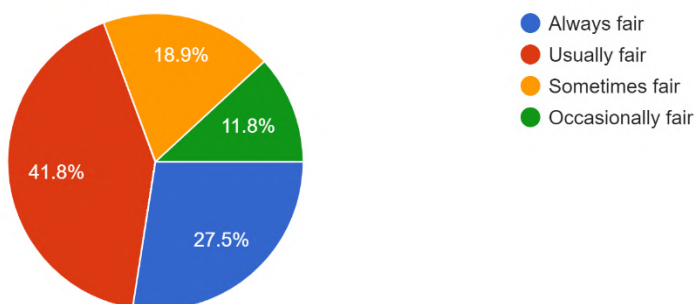
The teacher's approach to teaching can best be described as

710 responses



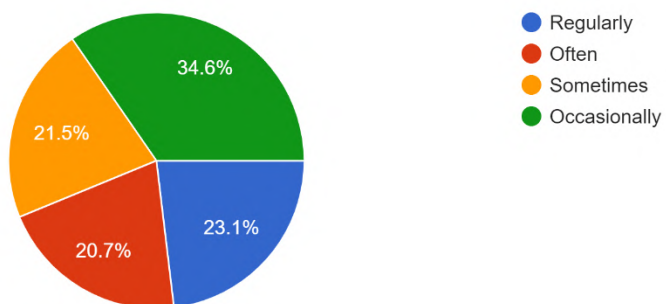
Fairness of the internal evaluation process by the teachers

710 responses



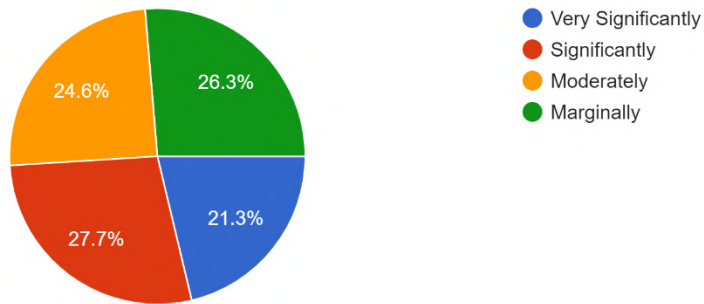
The institute takes active interest in promoting internship, student exchange, field visit opportunities for students.

710 responses



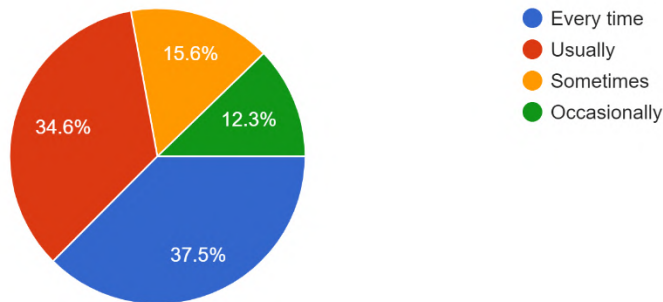
The teaching and mentoring process in your institution facilitates you in cognitive, social and emotional growth.

710 responses



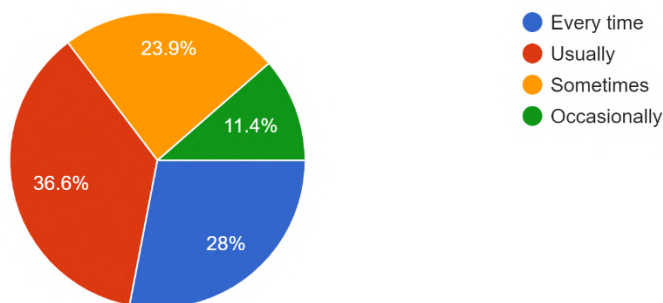
Teachers inform you about your expected competencies, course outcomes and programme outcomes.

710 responses



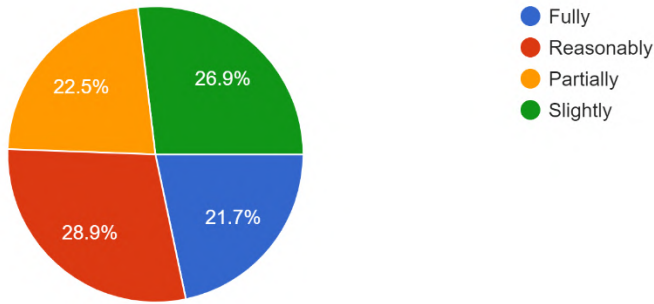
The teachers illustrate the concepts through examples and applications.

710 responses



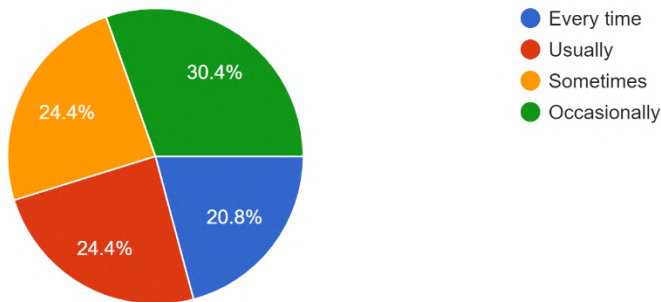
The teachers identify your strengths and encourage you with providing right level of challenges.

710 responses



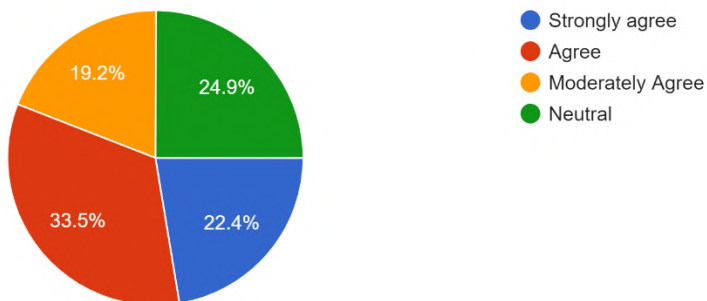
Teachers are able to identify your weaknesses and help you to overcome them.

710 responses



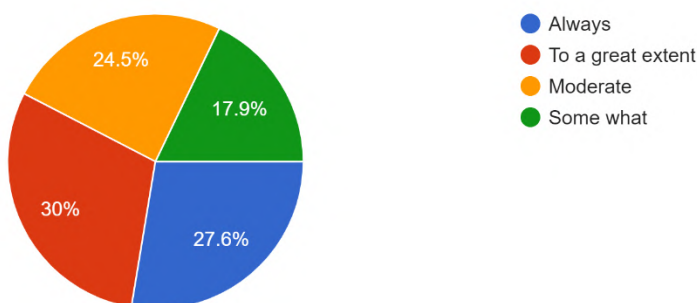
The institution makes effort to engage students in the monitoring, review, and continuous quality improvement of the teaching learning process.

710 responses



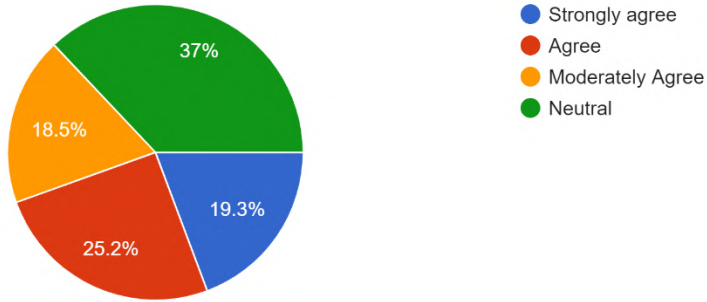
The institute/ teachers use student centric methods, such as experiential learning, project-based learning, participative learning, and problem-solving methodologies for enhancing learning experiences.

710 responses



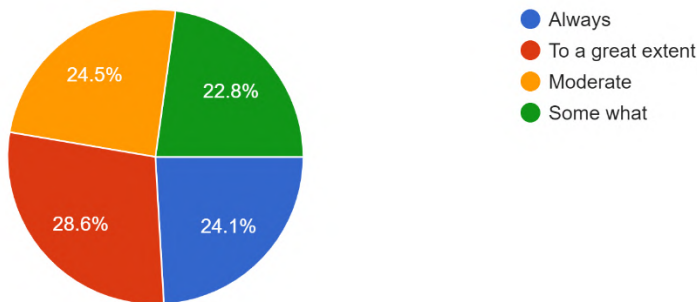
Teachers encourage you to participate in extracurricular activities.

710 responses



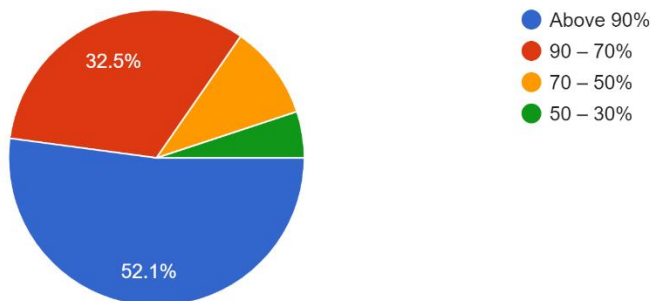
Efforts are made by the institute/ teachers to inculcate soft skills, life skills and employability skills to make you ready for the world of work.

710 responses



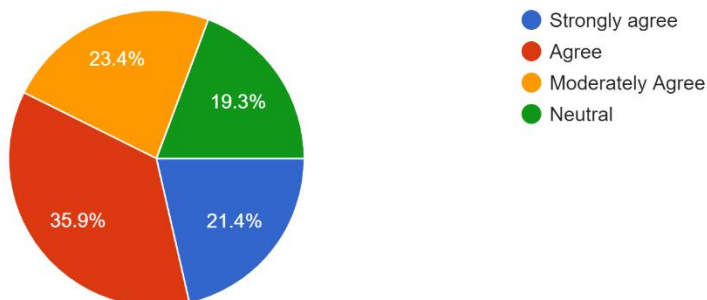
What percentage of teachers use ICT tools such as LCD projector, Multimedia, etc. while teaching?

710 responses



The overall quality of teaching learning process in your institute is very good.

710 responses

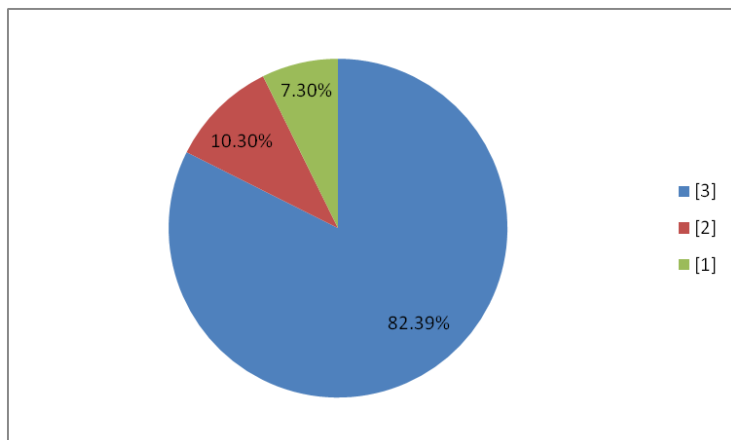


Feedback on Institutional Facilities for the Academic year 2022-23

Rating on a 3-point scale, where 3 is 'Best' and 1 is the 'Worst' rating.

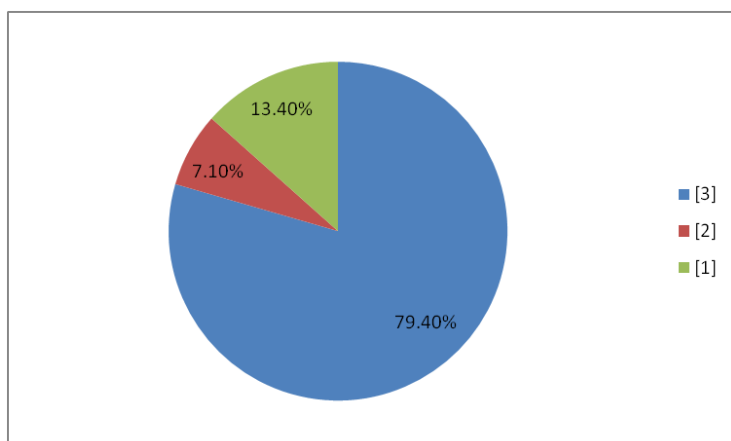
How do you rate the availability of the text and reference books in the library?

LRC (Including digital library)



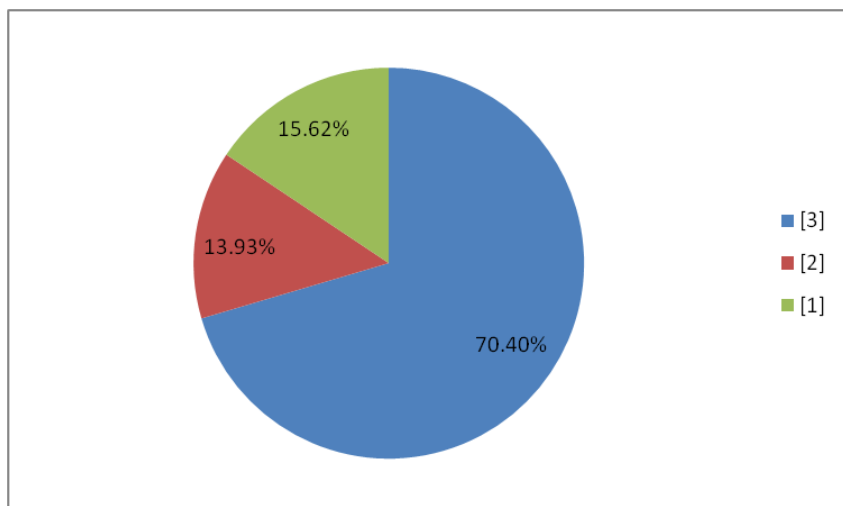
How do you rate the infrastructure, cleanliness, and other facilities in hostel?

Hostel facilities



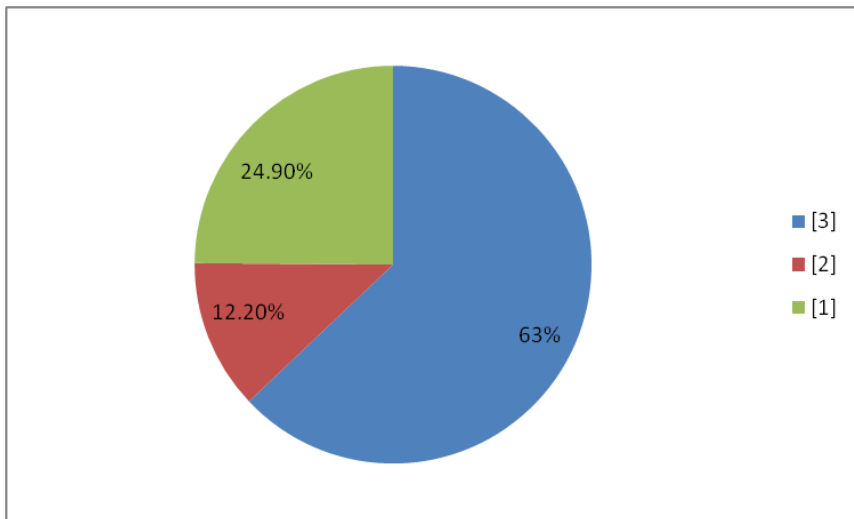
How do you rate the quality of food, hygiene maintenance in the mess and cafeterias

Mess facilities



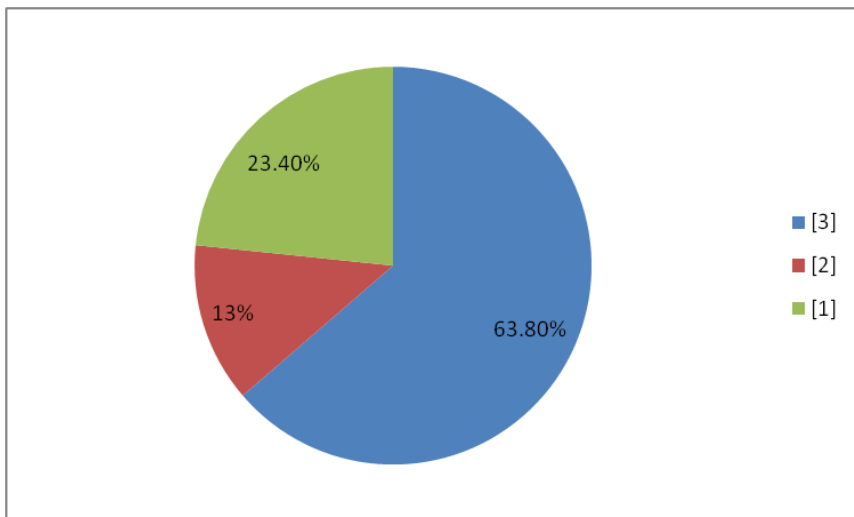
How do you rate the Institute activities that help in getting jobs and placements?

Training and Placement



How do you rate the services and your interaction with Registry department?

Registry department



How do you rate the services and your interaction with Accounts department?

